



POLISH CHAMBER OF COMMERCE

Monthly review of the economic situation  
in voivodships

**Polish Chamber of Commerce**

29/12/2022

---

## Table of Contents

Table of Contents	p. 2
Explanations and comments	p. 3
Data summary for voivodships	p. 4
POLAND	p. 5
DOLNOŚLĄSKIE	p. 6
KUJAWSKO-POMORSKIE	p. 7
LUBELSKIE	p. 8
LUBUSKIE	p. 9
ŁÓDZKIE	p. 10
MAŁOPOLSKIE	p. 11
MAZOWIECKIE	p. 12
OPOLSKIE	p. 13
PODKARPACKIE	p. 14
PODLASKIE	p. 15
POMORSKIE	p. 16
ŚLĄSKIE	p. 17
ŚWIĘTOKRZYSKIE	p. 18
WARMIŃSKO-MAZURSKIE	p. 19
WIELKOPOLSKIE	p. 20
ZACHODNIOPOMORSKIE	p. 21

---

## Explanations and comments

Economic analysts and commentators tend to focus on data illustrating the current state and changes of the entire Polish economy. This approach is natural.

Data generalization allows for better understanding and easier formulation of projections. However, from the point of view of individual companies, data synthesis at the national level is only relevant for the largest entities.

Doing business wisely and planning for the future requires good business recognition of the current local conditions on which the company operates. For most companies in Poland, this locality concerns one voivodeship, and at a more advanced stage of expansion to several of them.

The information systematically presented by public statistics shows a large differentiation of voivodeships. This appears in their potential in terms of area, population, the GDP, but also parameters such as the current growth rate, available labour resources, unemployment, wage levels and dynamics, progress in productivity.

The intention of the Polish Chamber of Commerce is to support the work of entrepreneurs by familiarizing them with the economic potential and the current economic situation in individual voivodeships. In the study below, the data provided by Central Statistical Office have been supplemented by estimates compiled by the Chamber experts.

Analysing the current business environment, concerning the enterprise sector - especially industry and construction - data is important. In particular: level of sales and the current pace of its growth together with the average productivity of an employee, measured by sales per employee, and the level and dynamics of employment, the level and dynamics of wages, productivity dynamics. It seems important to monitor the relationship between dynamics of sales, employment, wages, and productivity.

Assessing the economic potential and economic strength of individual voivodeships information about the level of GDP, population – especially active economically, but also information concerning the density of population and the urbanization rate, can be helpful. It should be emphasized that the GDP generated even by small voivodships in Poland is often at least comparable to the GDP of some countries of our region.

### Additional information

Poland is administratively divided into 16 voivodeships. These, in turn, are divided into poviats (380), and poviats into communes (2477). The largest voivodeship - mazowieckie - has an area of 35.5 thousand sq km and about 5.3 million inhabitants, the smallest - opolskie - 9.5 thousand sq kilometres and about 1 million inhabitants.

## Data summary for voivodships

Basic information	Area		Population		Density	Ratio of urban.	GDP (2021)	
	sq km	% of Poland	in thous.	% of Poland	People per km	%	million PLN	per capita PLN
POLAND	312 680	100,0%	37 827	100,0%	121,0	59,7%	2 623 948	69 366
DOLNOŚLĄSKIE	19 947	6,4%	2 892	7,6%	145,0	67,7%	218 050	75 395
KUJAWSKO-POMORSKIE	17 971	5,7%	2 012	5,3%	111,9	58,3%	114 667	57 000
LUBELSKIE	25 122	8,0%	2 031	5,4%	80,8	46,2%	98 660	48 589
LUBUSKIE	13 988	4,5%	983	2,6%	70,3	64,4%	56 415	57 408
ŁÓDZKIE	18 219	5,8%	2 386	6,3%	130,9	61,9%	161 635	67 755
MAŁOPOLSKIE	15 183	4,9%	3 429	9,1%	225,8	47,9%	212 015	61 832
MAZOWIECKIE	35 558	11,4%	5 512	14,6%	155,0	64,7%	602 196	109 262
OPOLSKIE	9 412	3,0%	945	2,5%	100,4	53,0%	53 004	56 077
PODKARPACKIE	17 846	5,7%	2 082	5,5%	116,6	41,2%	100 760	48 405
PODLASKIE	20 187	6,5%	1 146	3,0%	56,8	60,9%	59 564	51 984
POMORSKIE	18 310	5,9%	2 359	6,2%	128,8	62,7%	154 551	65 529
ŚLĄSKIE	12 333	3,9%	4 360	11,5%	353,5	76,0%	307 002	70 413
ŚWIĘTOKRZYSKIE	11 711	3,7%	1 182	3,1%	101,0	44,9%	61 138	51 715
WARMIŃSKO-MAZURSKIE	24 173	7,7%	1 370	3,6%	56,7	59,1%	67 698	49 418
WIELKOPOLSKIE	29 827	9,5%	3 496	9,2%	117,2	53,5%	260 296	74 449
ZACHODNIOPOMORSKIE	22 892	7,3%	1 645	4,3%	71,9	68,2%	96 299	58 537

Labor market	Activ persons	Unemployment		Employed persons in thous.			Wages - PLN	
	in thous.	in thous.	rate	total	industry	construction	industry	construction
POLAND	15 613	800,2	5,1%	14 813	2 768	429	6 529	6 500
DOLNOŚLĄSKIE	1 214	53,4	4,4%	1 160	231	29	7 372	6 898
KUJAWSKO-POMORSKIE	765	55,1	7,2%	710	138	20	5 699	5 601
LUBELSKIE	754	59,6	7,9%	695	100	18	6 041	5 200
LUBUSKIE	356	15,3	4,3%	341	71	8	6 045	5 575
ŁÓDZKIE	998	53,9	5,4%	944	171	20	6 230	5 728
MAŁOPOLSKIE	1 418	63,8	4,5%	1 354	219	42	6 448	5 815
MAZOWIECKIE	2 757	115,8	4,2%	2 641	390	92	7 173	8 533
OPOLSKIE	339	20,0	5,9%	319	60	8	6 239	5 631
PODKARPACKIE	782	68,0	8,7%	714	137	20	5 624	5 080
PODLASKIE	428	30,8	7,2%	397	59	13	5 787	6 946
POMORSKIE	927	41,7	4,5%	885	157	34	6 748	6 527
ŚLĄSKIE	1 797	64,7	3,6%	1 733	440	53	7 189	6 174
ŚWIĘTOKRZYSKIE	441	33,1	7,5%	408	69	10	5 773	4 894
WARMIŃSKO-MAZURSKIE	468	39,8	8,5%	428	81	11	5 459	5 271
WIELKOPOLSKIE	1 572	45,6	2,9%	1 527	349	41	6 136	6 023
ZACHODNIOPOMORSKIE	597	39,4	6,6%	558	94	12	6 092	5 517

Enterprise sector - results	Industry				Construction			
	Total sales million PLN	Per employed thous. PLN	Sales I - XI 2021 = 100	Efficiency I - XI 2022	Total sales million PLN	Per employed thous. PLN	Sales I - XI 2021 = 100	Efficiency I - XI 2022
POLAND	2 263 824	818	110,9	109,4	346 958	809	131,0	128,7
DOLNOŚLĄSKIE	215 098	931	111,8	110,8	20 618	711	134,9	129,6
KUJAWSKO-POMORSKIE	95 375	691	107,0	104,9	14 344	717	140,1	137,1
LUBELSKIE	58 602	586	110,4	109,5	7 912	440	131,3	127,8
LUBUSKIE	55 310	779	108,3	108,6	3 495	437	137,4	133,1
ŁÓDZKIE	126 660	741	117,3	115,8	18 419	921	150,3	155,4
MAŁOPOLSKIE	159 749	729	106,6	104,4	31 280	745	120,5	122,7
MAZOWIECKIE	527 517	1 353	115,3	114,7	99 247	1079	126,4	123,1
OPOLSKIE	47 043	784	112,6	111,9	6 770	846	127,5	121,8
PODKARPACKIE	77 852	568	116,1	110,8	10 103	505	121,3	121,5
PODLASKIE	46 299	785	110,9	109,0	8 964	690	123,6	123,8
POMORSKIE	130 212	829	97,1	95,2	25 230	742	131,0	123,4
ŚLĄSKIE	327 743	745	115,6	114,2	37 490	707	135,8	132,6
ŚWIĘTOKRZYSKIE	43 350	628	113,2	112,3	6 828	683	179,4	179,6
WARMIŃSKO-MAZURSKIE	46 734	577	107,1	106,0	5 201	473	119,2	119,1
WIELKOPOLSKIE	241 100	691	106,5	104,9	40 255	982	130,1	128,2
ZACHODNIOPOMORSKIE	65 179	693	120,0	117,9	10 802	900	149,8	147,4

## POLAND

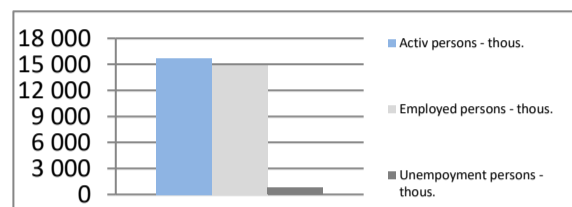
<b>Area</b>	sq km	312 680	<b>Popul.</b>	thous.	37 827
	% of Poland	100,0%		% of Poland	100,0%
<b>Density of population</b>	people per sq km	121,0	<b>Rate of urbanisation</b>		59,7%
	Poland	121,0		Poland	59,7%
<b>GDP per capita</b>	thous. PLN	69 366	<b>GDP</b>	million PLN	2 623 948
	avg for Poland = 100%	100,0%		% of Poland	100,00%

### Labor market

End of November 2022

Unemployment persons - thous.	800,2
Employed persons - thous.	14 890,0
Activ persons - thous.	15 690,2
Unemployment rate	5,1%
	Poland 5,1%

### Labor market

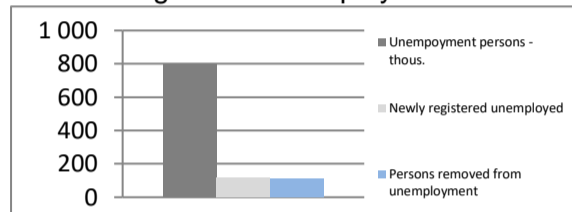


### Labor market

In November 2022

Unemployed per 1 job advertisement	13,0
Newly registered unemployed	114,3
Persons removed from unemployment	110,2

### Registered unemployment

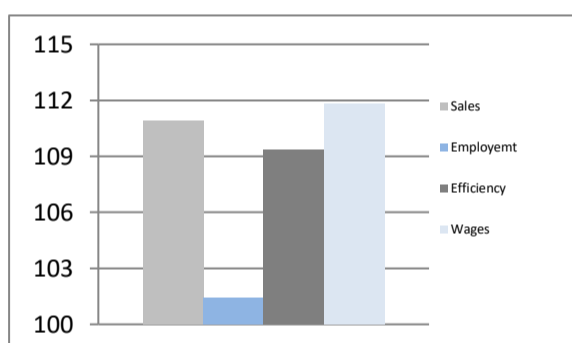


### Industry - enterprise sector

I - XI 2022

Total sales	million PLN	2 263 824
Sales per employed	thous. PLN	818
Employment	in thous.	2 768
Wages	PLN	6 529
Sales	I - XI 2021 = 100	110,9
Employment	I - XI 2021 = 100	101,4
Efficiency	I - XI 2021 = 100	109,4
Wages	I - XI 2021 = 100	111,8

### Dynamics - industry

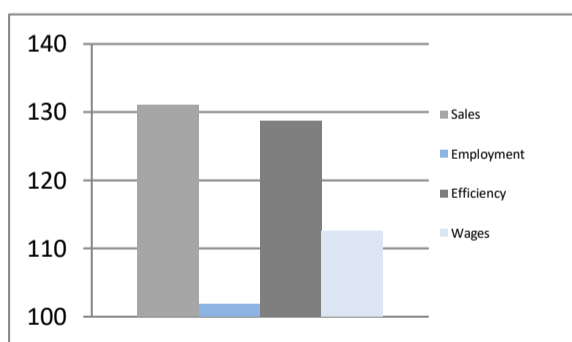


### Construction - enterprise sector

I - XI 2022

Total sales	million PLN	346 958
Sales per employed	thous. PLN	809
Employment	in thous.	429
Wages	PLN	6 500
Sales	I - XI 2021 = 100	131,0
Employment	I - XI 2021 = 100	101,8
Efficiency	I - XI 2021 = 100	128,7
Wages	I - XI 2021 = 100	112,6

### Dynamics - construction

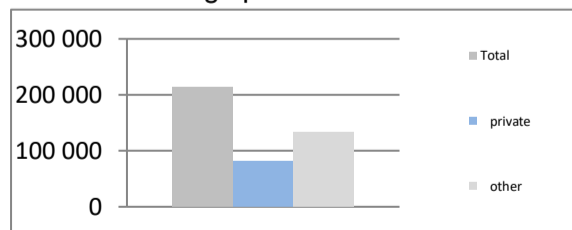


### Dwellings put into use

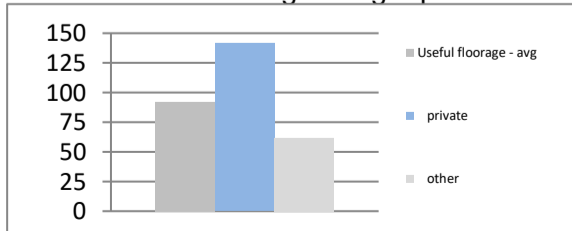
I - XI 2022

Total	pcs	214 234
private	pcs	81 430
other	pcs	132 804
Dynamics	I - XI 2021 = 100	101,7
Useful floor area	thous. sq m	19 749
private	thous. sq m	11 519
other	thous. sq m	8 231
Dynamics	I - XI 2021 = 100	101,3
Useful floorage - avg	sq m	92
private	sq m	141
other	sq m	62

### Dwellings put into use



### Useful floorage - avg sq m



## DOLNOŚLĄSKIE

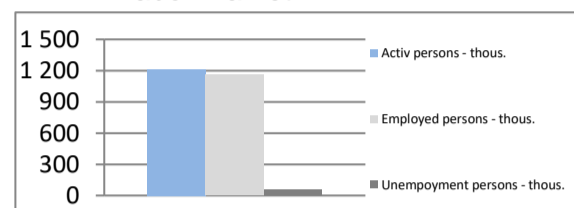
<b>Area</b>	sq km	19 947	<b>Popul.</b>	thous.	2 892
	% of Poland	6,4%		% of Poland	7,6%
<b>Density of population</b>	people per sq km	145,0	<b>Rate of urbanisation</b>		67,7%
	Poland	121,0		Poland	59,7%
<b>GDP per capita</b>	thous. PLN	75 395	<b>GDP</b>	million PLN	218 050
	avg for Poland = 100%	108,7%		% of Poland	8,31%

### Labor market

End of November 2022

Unemployment persons - thous.	53,4
Employed persons - thous.	1 160,2
Activ persons - thous.	1 213,6
Unemployment rate	4,4%
	Poland 5,1%

### Labor market

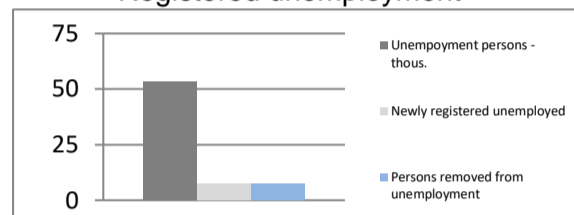


### Labor market

In November 2022

Unemployed per 1 job advertisement	7,0
Newly registered unemployed	7,6
Persons removed from unemployment	7,4

### Registered unemployment

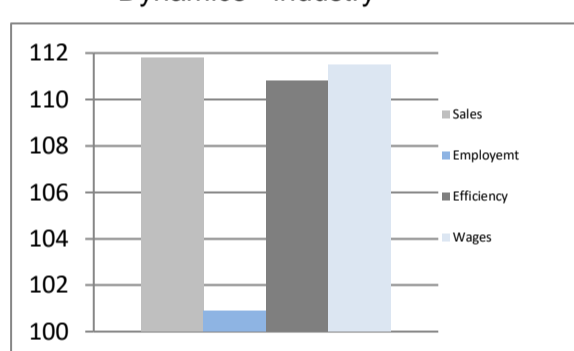


### Industry - enterprise sector

I - XI 2022

Total sales	million PLN	215 098
Sales per employed	thous. PLN	931
Employment	in thous.	231
Wages	PLN	7 372
Sales	I - XI 2021 = 100	111,8
Employment	I - XI 2021 = 100	100,9
Efficiency	I - XI 2021 = 100	110,8
Wages	I - XI 2021 = 100	111,5

### Dynamics - industry

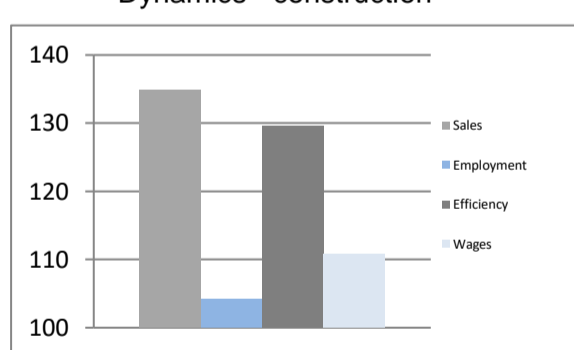


### Construction - enterprise sector

I - XI 2022

Total sales	million PLN	20 618
Sales per employed	thous. PLN	711
Employment	in thous.	29
Wages	PLN	6 898
Sales	I - XI 2021 = 100	134,9
Employment	I - XI 2021 = 100	104,1
Efficiency	I - XI 2021 = 100	129,6
Wages	I - XI 2021 = 100	110,7

### Dynamics - construction

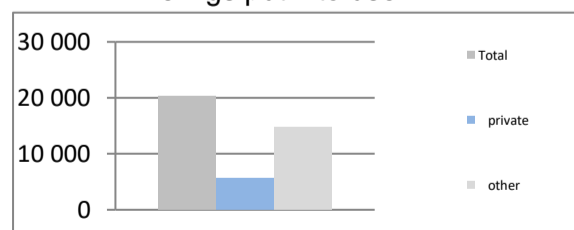


### Dwellings put into use

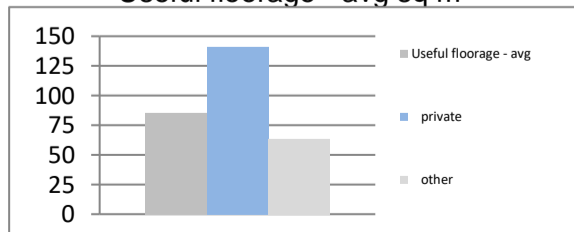
I - XI 2022

Total	pcs	20 306
private	pcs	5 627
other	pcs	14 679
Dynamics	I - XI 2021 = 100	88,8
Useful floor area	thous. sq m	1 727
private	thous. sq m	795
other	thous. sq m	932
Dynamics	I - XI 2021 = 100	91,4
Useful floorage - avg	sq m	85
private	sq m	141
other	sq m	64

### Dwellings put into use



### Useful floorage - avg sq m



## KUJAWSKO-POMORSKIE

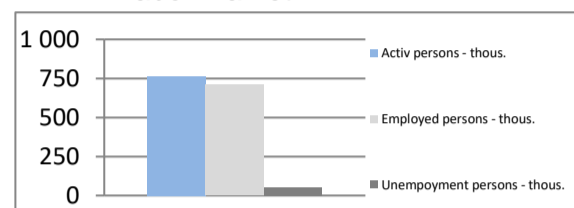
<b>Area</b>	sq km	17 971	<b>Popul.</b>	thous.	2 012
	% of Poland	5,7%		% of Poland	5,3%
<b>Density of population</b>	people per sq km	111,9	<b>Rate of urbanisation</b>		58,3%
	Poland	121,0		Poland	59,7%
<b>GDP per capita</b>	thous. PLN	57 000	<b>GDP</b>	million PLN	114 667
	avg for Poland = 100%	82,2%		% of Poland	4,37%

### Labor market

End of November 2022

Unemployment persons - thous.	55,1
Employed persons - thous.	710,2
Activ persons - thous.	765,3
Unemployment rate	7,2%
	Poland 5,1%

### Labor market

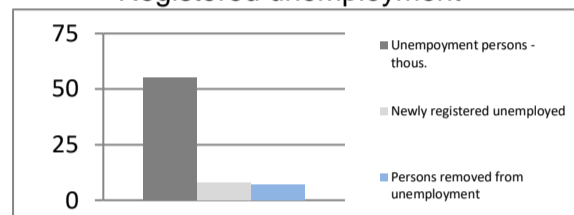


### Labor market

In November 2022

Unemployed per 1 job advertisement	18,0
Newly registered unemployed	7,9
Persons removed from unemployment	7,2

### Registered unemployment

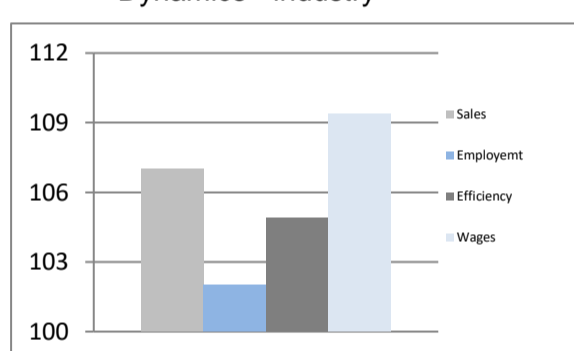


### Industry - enterprise sector

I - XI 2022

Total sales	million PLN	95 375
Sales per employed	thous. PLN	691
Employment	in thous.	138
Wages	PLN	5 699
Sales	I - XI 2021 = 100	107,0
Employment	I - XI 2021 = 100	102,0
Efficiency	I - XI 2021 = 100	104,9
Wages	I - XI 2021 = 100	109,4

### Dynamics - industry

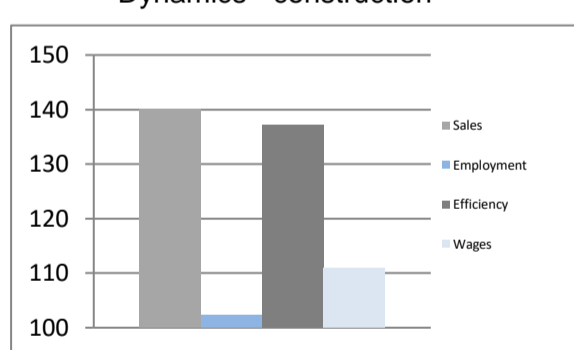


### Construction - enterprise sector

I - XI 2022

Total sales	million PLN	14 344
Sales per employed	thous. PLN	717
Employment	in thous.	20
Wages	PLN	5 601
Sales	I - XI 2021 = 100	140,1
Employment	I - XI 2021 = 100	102,2
Efficiency	I - XI 2021 = 100	137,1
Wages	I - XI 2021 = 100	110,9

### Dynamics - construction



### Dwellings put into use

I - XI 2022

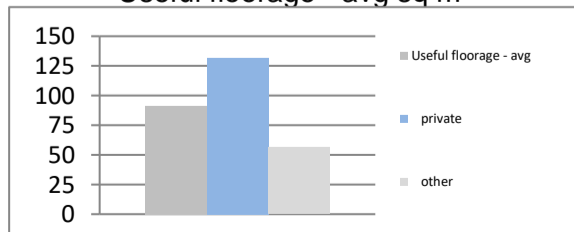
Total	pcs	10 293
private	pcs	4 783
other	pcs	5 510
Dynamics	I - XI 2021 = 100	120,0

### Dwellings put into use



Useful floor area	thous. sq m	941
private	thous. sq m	630
other	thous. sq m	311
Dynamics	I - XI 2021 = 100	114,1

### Useful floorage - avg sq m



Useful floorage - avg	sq m	91
private	sq m	132
other	sq m	56

## LUBELSKIE

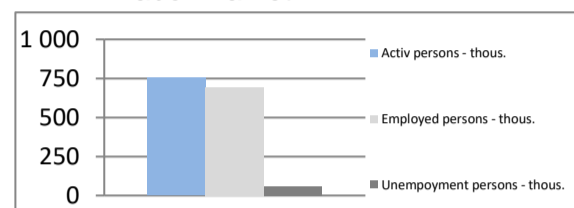
<b>Area</b>	sq km	25 122	<b>Popul.</b>	thous.	2 031
	% of Poland	8,0%		% of Poland	5,4%
<b>Density of population</b>	people per sq km	80,8	<b>Rate of urbanisation</b>		46,2%
	Poland	121,0		Poland	59,7%
<b>GDP per capita</b>	thous. PLN	48 589	<b>GDP</b>	million PLN	98 660
	avg for Poland = 100%	70,0%		% of Poland	3,76%

### Labor market

End of November 2022

Unemployment persons - thous.	59,6
Employed persons - thous.	694,8
Activ persons - thous.	754,4
Unemployment rate	7,9%
	Poland 5,1%

### Labor market

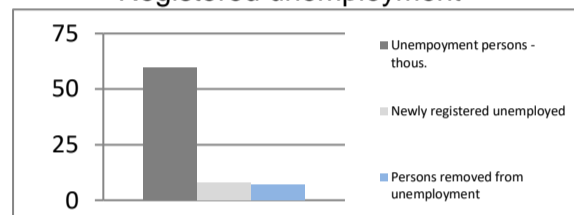


### Labor market

In November 2022

Unemployed per 1 job advertisement	27,0
Newly registered unemployed	7,9
Persons removed from unemployment	7,0

### Registered unemployment

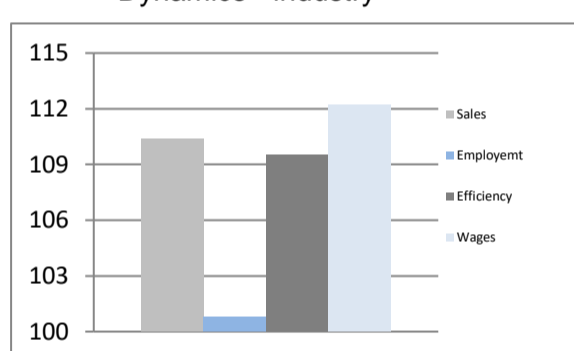


### Industry - enterprise sector

I - XI 2022

Total sales	million PLN	58 602
Sales per employed	thous. PLN	586
Employment	in thous.	100
Wages	PLN	6 041
Sales	I - XI 2021 = 100	110,4
Employment	I - XI 2021 = 100	100,8
Efficiency	I - XI 2021 = 100	109,5
Wages	I - XI 2021 = 100	112,2

### Dynamics - industry

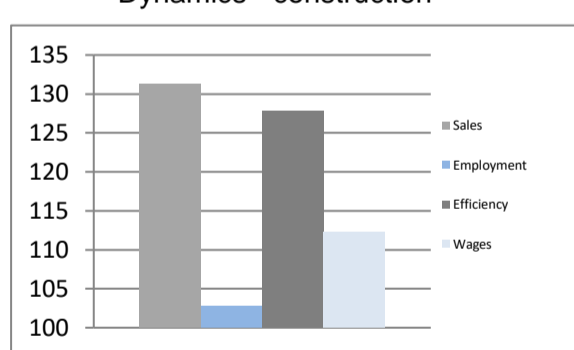


### Construction - enterprise sector

I - XI 2022

Total sales	million PLN	7 912
Sales per employed	thous. PLN	440
Employment	in thous.	18
Wages	PLN	5 200
Sales	I - XI 2021 = 100	131,3
Employment	I - XI 2021 = 100	102,7
Efficiency	I - XI 2021 = 100	127,8
Wages	I - XI 2021 = 100	112,3

### Dynamics - construction

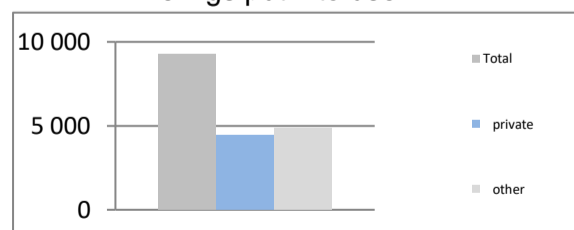


### Dwellings put into use

I - XI 2022

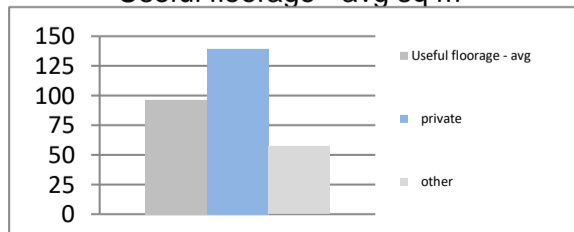
Total	pcs	9 282
private	pcs	4 428
other	pcs	4 854
Dynamics	I - XI 2021 = 100	116,0

### Dwellings put into use



Useful floor area	thous. sq m	896
private	thous. sq m	618
other	thous. sq m	278
Dynamics	I - XI 2021 = 100	114,2

### Useful floorage - avg sq m



Useful floorage - avg	sq m	96
private	sq m	140
other	sq m	57

## LUBUSKIE

<b>Area</b>	sq km	13 988	<b>Popul.</b>	thous.	983
	% of Poland	4,5%		% of Poland	2,6%
<b>Density of population</b>	people per sq km	70,3	<b>Rate of urbanisation</b>		64,4%
	Poland	121,0		Poland	59,7%
<b>GDP per capita</b>	thous. PLN	57 408	<b>GDP</b>	million PLN	56 415
	avg for Poland = 100%	82,8%		% of Poland	2,15%

### Labor market

End of November 2022

Unemployment persons - thous.	15,3
Employed persons - thous.	340,5
Activ persons - thous.	355,8

Unemployment rate	4,3%
Poland	5,1%

### Labor market

In November 2022

Unemployed per 1 job advertisement	9,0
Newly registered unemployed	3,0
Persons removed from unemployment	2,8

### Industry - enterprise sector

I - XI 2022

Total sales	million PLN	55 310
Sales per employed	thous. PLN	779
Employment	in thous.	71
Wages	PLN	6 045
Sales	I - XI 2021 = 100	108,3
Employment	I - XI 2021 = 100	99,7
Efficiency	I - XI 2021 = 100	108,6
Wages	I - XI 2021 = 100	111,3

### Construction - enterprise sector

I - XI 2022

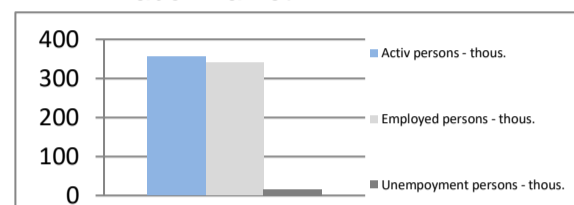
Total sales	million PLN	3 495
Sales per employed	thous. PLN	437
Employment	in thous.	8
Wages	PLN	5 575
Sales	I - XI 2021 = 100	137,4
Employment	I - XI 2021 = 100	103,2
Efficiency	I - XI 2021 = 100	133,1
Wages	I - XI 2021 = 100	114,1

### Dwellings put into use

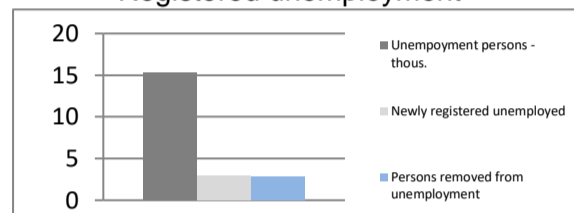
I - XI 2022

Total	pcs	5 082
private	pcs	2 122
other	pcs	2 960
Dynamics	I - XI 2021 = 100	108,9
Useful floor area	thous. sq m	448
private	thous. sq m	268
other	thous. sq m	180
Dynamics	I - XI 2021 = 100	109,1
Useful floorage - avg	sq m	88
private	sq m	126
other	sq m	61

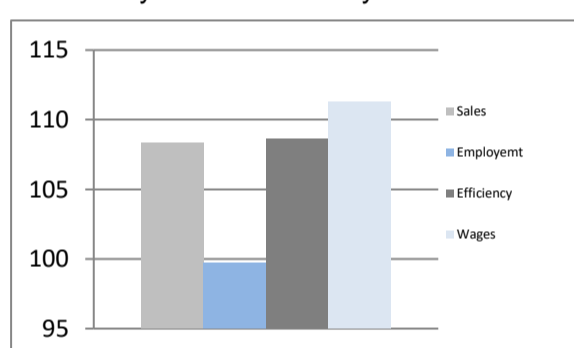
### Labor market



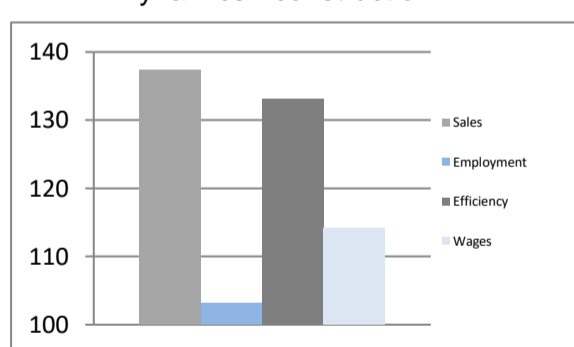
### Registered unemployment



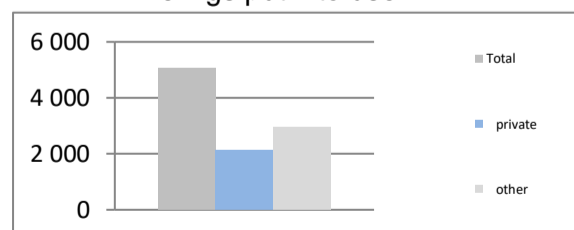
### Dynamics - industry



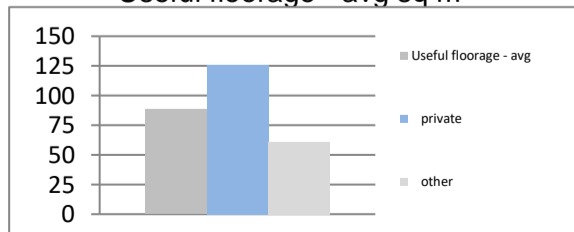
### Dynamics - construction



### Dwellings put into use



### Useful floorage - avg sq m



## ŁÓDZKIE

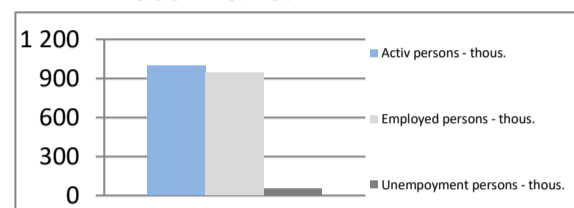
<b>Area</b>	sq km	18 219	<b>Popul.</b>	thous.	2 386
	% of Poland	5,8%		% of Poland	6,3%
<b>Density of population</b>	people per sq km	130,9	<b>Rate of urbanisation</b>		61,9%
	Poland	121,0		Poland	59,7%
<b>GDP per capita</b>	thous. PLN	67 755	<b>GDP</b>	million PLN	161 635
	avg for Poland = 100%	97,7%		% of Poland	6,16%

### Labor market

End of November 2022

Unemployment persons - thous.	53,9
Employed persons - thous.	944,2
Activ persons - thous.	998,1
Unemployment rate	5,4%
	Poland 5,1%

### Labor market

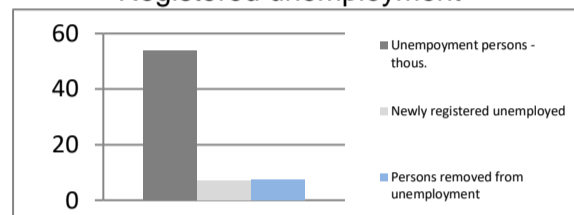


### Labor market

In November 2022

Unemployed per 1 job advertisement	14,0
Newly registered unemployed	6,8
Persons removed from unemployment	7,5

### Registered unemployment

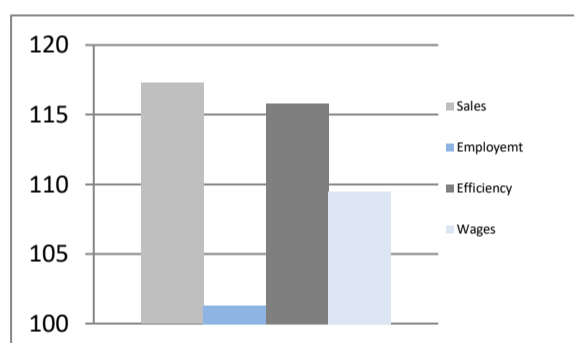


### Industry - enterprise sector

I - XI 2022

Total sales	million PLN	126 660
Sales per employed	thous. PLN	741
Employment	in thous.	171
Wages	PLN	6 230
Sales	I - XI 2021 = 100	117,3
Employment	I - XI 2021 = 100	101,3
Efficiency	I - XI 2021 = 100	115,8
Wages	I - XI 2021 = 100	109,5

### Dynamics - industry

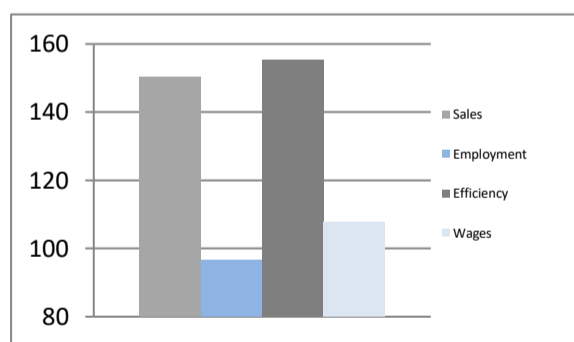


### Construction - enterprise sector

I - XI 2022

Total sales	million PLN	18 419
Sales per employed	thous. PLN	921
Employment	in thous.	20
Wages	PLN	5 728
Sales	I - XI 2021 = 100	150,3
Employment	I - XI 2021 = 100	96,7
Efficiency	I - XI 2021 = 100	155,4
Wages	I - XI 2021 = 100	107,7

### Dynamics - construction

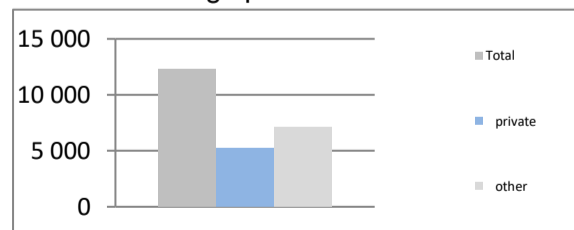


### Dwellings put into use

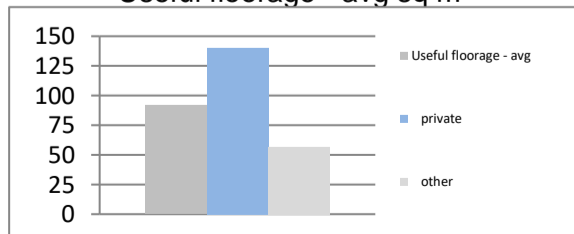
I - XI 2022

Total	pcs	12 288
private	pcs	5 201
other	pcs	7 087
Dynamics	I - XI 2021 = 100	111,9
Useful floor area	thous. sq m	1 130
private	thous. sq m	729
other	thous. sq m	401
Dynamics	I - XI 2021 = 100	107,8
Useful floorage - avg	sq m	92
private	sq m	140
other	sq m	57

### Dwellings put into use



### Useful floorage - avg sq m



## MAŁOPOLSKIE

<b>Area</b>	sq km	15 183	<b>Popul.</b>	thous.	3 429
	% of Poland	4,9%		% of Poland	9,1%
<b>Density of population</b>	people per sq km	225,8	<b>Rate of urbanisation</b>		47,9%
	Poland	121,0		Poland	59,7%
<b>GDP per capita</b>	thous. PLN	61 832	<b>GDP</b>	million PLN	212 015
	avg for Poland = 100%	89,1%		% of Poland	8,08%

### Labor market

End of November 2022

Unemployment persons - thous.	63,8
Employed persons - thous.	1 354,0
Activ persons - thous.	1 417,8

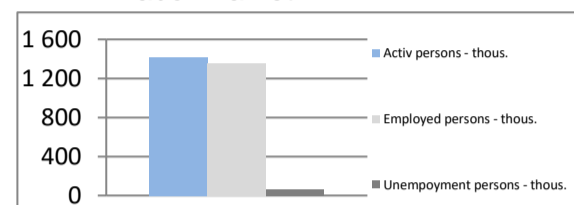
Unemployment rate	4,5%
Poland	5,1%

### Labor market

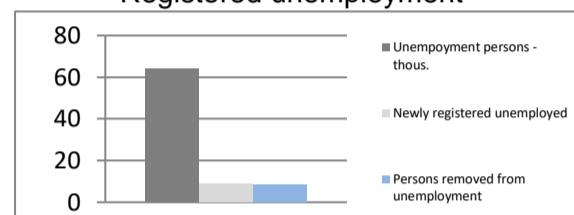
In November 2022

Unemployed per 1 job advertisement	10,0
Newly registered unemployed	8,7
Persons removed from unemployment	8,5

### Labor market



### Registered unemployment

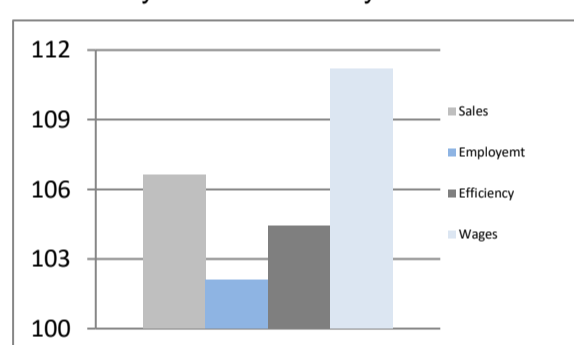


### Industry - enterprise sector

I - XI 2022

Total sales	million PLN	159 749
Sales per employed	thous. PLN	729
Employment	in thous.	219
Wages	PLN	6 448
Sales	I - XI 2021 = 100	106,6
Employment	I - XI 2021 = 100	102,1
Efficiency	I - XI 2021 = 100	104,4
Wages	I - XI 2021 = 100	111,2

### Dynamics - industry

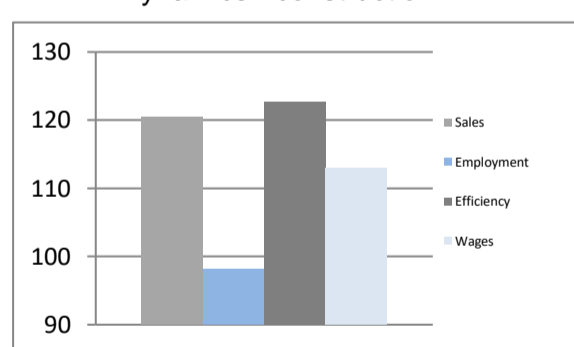


### Construction - enterprise sector

I - XI 2022

Total sales	million PLN	31 280
Sales per employed	thous. PLN	745
Employment	in thous.	42
Wages	PLN	5 815
Sales	I - XI 2021 = 100	120,5
Employment	I - XI 2021 = 100	98,2
Efficiency	I - XI 2021 = 100	122,7
Wages	I - XI 2021 = 100	112,9

### Dynamics - construction

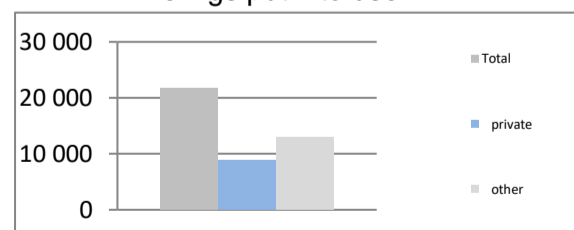


### Dwellings put into use

I - XI 2022

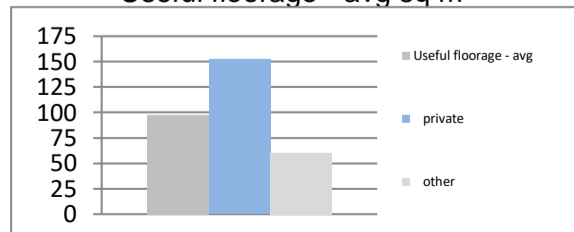
Total	pcs	21 698
private	pcs	8 757
other	pcs	12 941
Dynamics	I - XI 2021 = 100	108,2

### Dwellings put into use



Useful floor area	thous. sq m	2 115
private	thous. sq m	1 335
other	thous. sq m	780
Dynamics	I - XI 2021 = 100	108,8

### Useful floorage - avg sq m



Useful floorage - avg	sq m	97
private	sq m	152
other	sq m	60

## MAZOWIECKIE

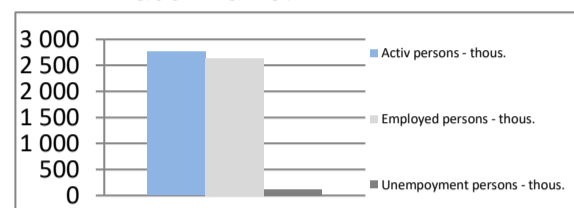
<b>Area</b>	sq km	35 558	<b>Popul.</b>	thous.	5 512
	% of Poland	11,4%		% of Poland	14,6%
<b>Density of population</b>	people per sq km	155,0	<b>Rate of urbanisation</b>		64,7%
	Poland	121,0		Poland	59,7%
<b>GDP per capita</b>	thous. PLN	109 262	<b>GDP</b>	million PLN	602 196
	avg for Poland = 100%	157,5%		% of Poland	22,95%

### Labor market

End of November 2022

Unemployment persons - thous.	115,8
Employed persons - thous.	2 641,3
Activ persons - thous.	2 757,1
Unemployment rate	4,2%
	Poland 5,1%

### Labor market

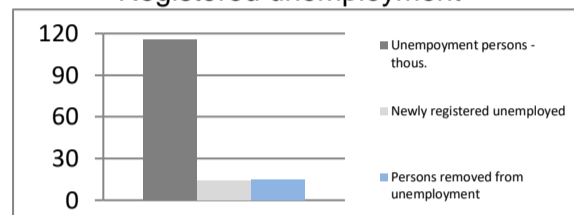


### Labor market

In November 2022

Unemployed per 1 job advertisement	15,0
Newly registered unemployed	14,1
Persons removed from unemployment	14,5

### Registered unemployment

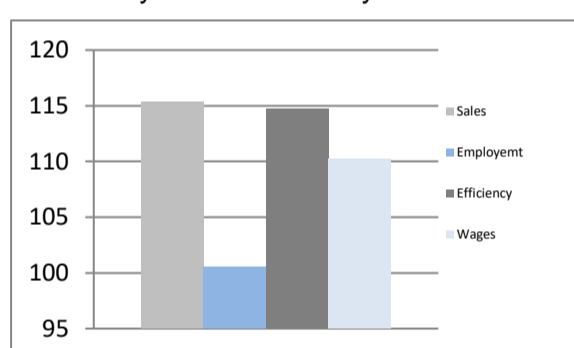


### Industry - enterprise sector

I - XI 2022

Total sales	million PLN	527 517
Sales per employed	thous. PLN	1 353
Employment	in thous.	390
Wages	PLN	7 173
Sales	I - XI 2021 = 100	115,3
Employment	I - XI 2021 = 100	100,5
Efficiency	I - XI 2021 = 100	114,7
Wages	I - XI 2021 = 100	110,2

### Dynamics - industry

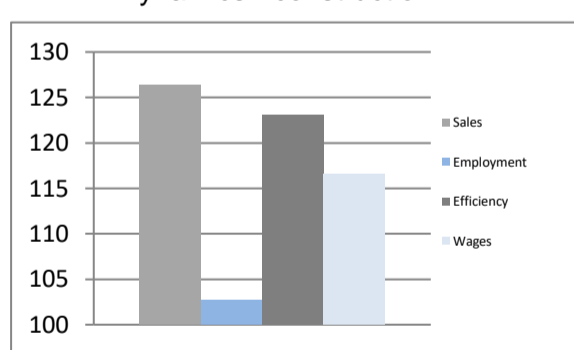


### Construction - enterprise sector

I - XI 2022

Total sales	million PLN	99 247
Sales per employed	thous. PLN	1079
Employment	in thous.	92
Wages	PLN	8 533
Sales	I - XI 2021 = 100	126,4
Employment	I - XI 2021 = 100	102,7
Efficiency	I - XI 2021 = 100	123,1
Wages	I - XI 2021 = 100	116,6

### Dynamics - construction

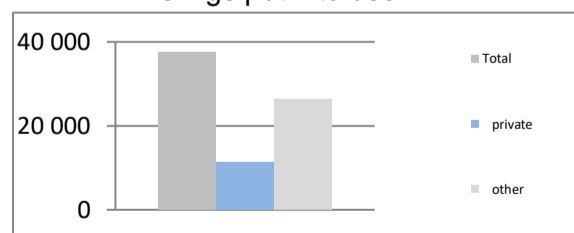


### Dwellings put into use

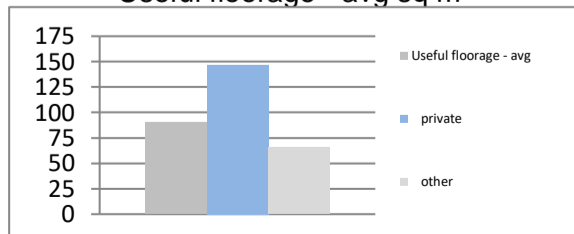
I - XI 2022

Total	pcs	37 650
private	pcs	11 337
other	pcs	26 313
Dynamics	I - XI 2021 = 100	96,0
Useful floor area	thous. sq m	3 398
private	thous. sq m	1 666
other	thous. sq m	1 731
Dynamics	I - XI 2021 = 100	94,8
Useful floorage - avg	sq m	90
private	sq m	147
other	sq m	66

### Dwellings put into use



### Useful floorage - avg sq m



## OPOLSKIE

<b>Area</b>	sq km	9 412	<b>Popul.</b>	thous.	945
	% of Poland	3,0%		% of Poland	2,5%
<b>Density of population</b>	people per sq km	100,4	<b>Rate of urbanisation</b>		53,0%
	Poland	121,0		Poland	59,7%
<b>GDP per capita</b>	thous. PLN	56 077	<b>GDP</b>	million PLN	53 004
	avg for Poland = 100%	80,8%		% of Poland	2,02%

### Labor market

End of November 2022

Unemployment persons - thous.	20,0
Employed persons - thous.	319,0
Activ persons - thous.	339,0

Unemployment rate	5,9%
Poland	5,1%

### Labor market

In November 2022

Unemployed per 1 job advertisement	11,0
Newly registered unemployed	2,8
Persons removed from unemployment	3,0

### Industry - enterprise sector

I - XI 2022

Total sales	million PLN	47 043
Sales per employed	thous. PLN	784
Employment	in thous.	60
Wages	PLN	6 239
Sales	I - XI 2021 = 100	112,6
Employment	I - XI 2021 = 100	100,6
Efficiency	I - XI 2021 = 100	111,9
Wages	I - XI 2021 = 100	112,1

### Construction - enterprise sector

I - XI 2022

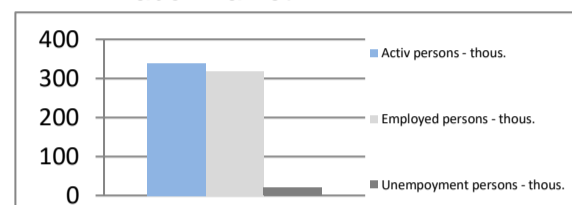
Total sales	million PLN	6 770
Sales per employed	thous. PLN	846
Employment	in thous.	8
Wages	PLN	5 631
Sales	I - XI 2021 = 100	127,5
Employment	I - XI 2021 = 100	104,7
Efficiency	I - XI 2021 = 100	121,8
Wages	I - XI 2021 = 100	107,4

### Dwellings put into use

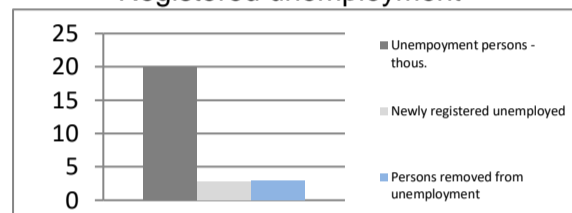
I - XI 2022

Total	pcs	2 865
private	pcs	1 347
other	pcs	1 518
Dynamics	I - XI 2021 = 100	96,8
Useful floor area	thous. sq m	309
private	thous. sq m	201
other	thous. sq m	108
Dynamics	I - XI 2021 = 100	97,4
Useful floorage - avg	sq m	108
private	sq m	149
other	sq m	71

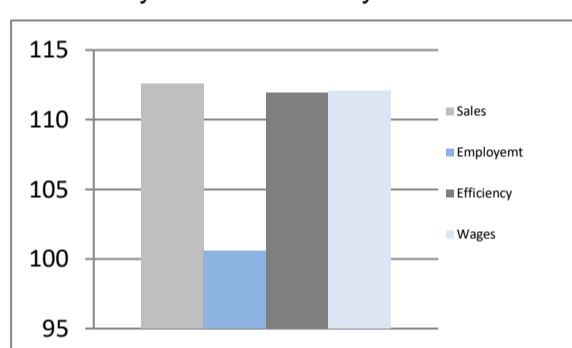
### Labor market



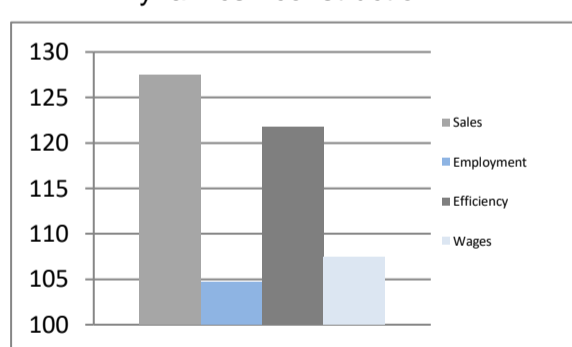
### Registered unemployment



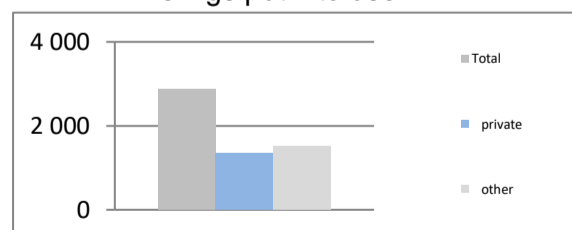
### Dynamics - industry



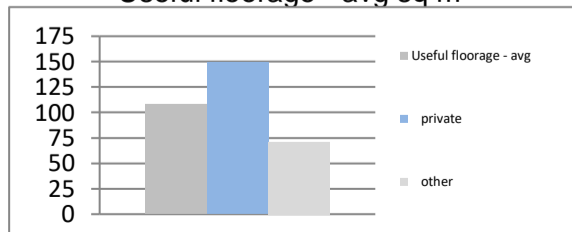
### Dynamics - construction



### Dwellings put into use



### Useful floorage - avg sq m



## PODKARPACKIE

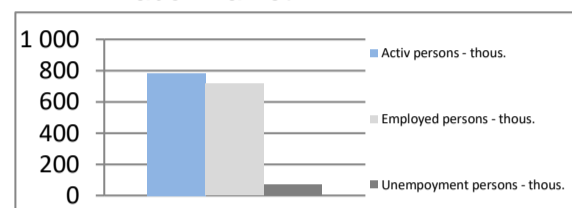
<b>Area</b>	sq km	17 846	<b>Popul.</b>	thous.	2 082
	% of Poland	5,7%		% of Poland	5,5%
<b>Density of population</b>	people per sq km	116,6	<b>Rate of urbanisation</b>		41,2%
	Poland	121,0		Poland	59,7%
<b>GDP per capita</b>	thous. PLN	48 405	<b>GDP</b>	million PLN	100 760
	avg for Poland = 100%	69,8%		% of Poland	3,84%

### Labor market

End of November 2022

Unemployment persons - thous.	68,0
Employed persons - thous.	713,6
Activ persons - thous.	781,6
Unemployment rate	8,7%
	Poland 5,1%

### Labor market

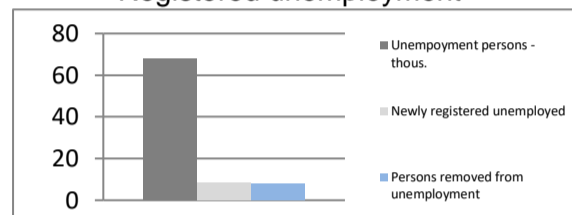


### Labor market

In November 2022

Unemployed per 1 job advertisement	32,0
Newly registered unemployed	8,4
Persons removed from unemployment	7,8

### Registered unemployment

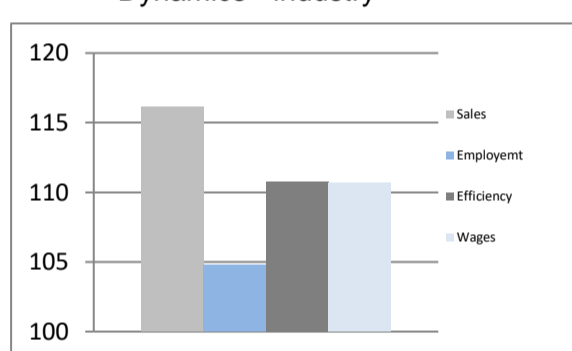


### Industry - enterprise sector

I - XI 2022

Total sales	million PLN	77 852
Sales per employed	thous. PLN	568
Employment	in thous.	137
Wages	PLN	5 624
Sales	I - XI 2021 = 100	116,1
Employment	I - XI 2021 = 100	104,8
Efficiency	I - XI 2021 = 100	110,8
Wages	I - XI 2021 = 100	110,7

### Dynamics - industry

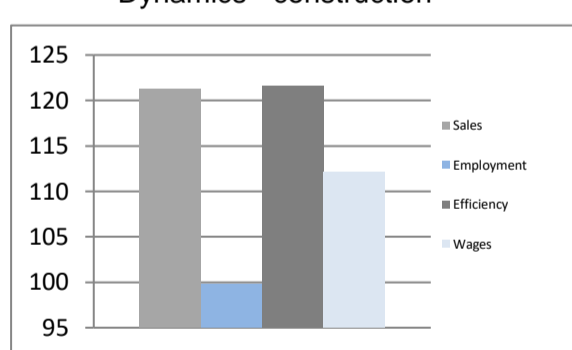


### Construction - enterprise sector

I - XI 2022

Total sales	million PLN	10 103
Sales per employed	thous. PLN	505
Employment	in thous.	20
Wages	PLN	5 080
Sales	I - XI 2021 = 100	121,3
Employment	I - XI 2021 = 100	99,8
Efficiency	I - XI 2021 = 100	121,5
Wages	I - XI 2021 = 100	112,1

### Dynamics - construction

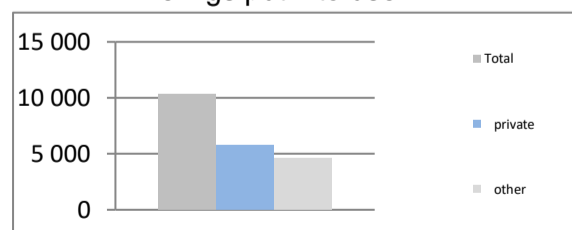


### Dwellings put into use

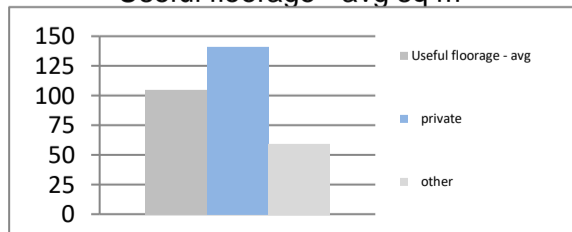
I - XI 2022

Total	pcs	10 350
private	pcs	5 741
other	pcs	4 609
Dynamics	I - XI 2021 = 100	115,5
Useful floor area	thous. sq m	1 083
private	thous. sq m	810
other	thous. sq m	273
Dynamics	I - XI 2021 = 100	110,0
Useful floorage - avg	sq m	105
private	sq m	141
other	sq m	59

### Dwellings put into use



### Useful floorage - avg sq m



## PODLASKIE

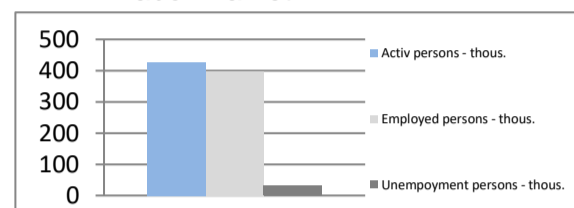
<b>Area</b>	sq km	20 187	<b>Popul.</b>	thous.	1 146
	% of Poland	6,5%		% of Poland	3,0%
<b>Density of population</b>	people per sq km	56,8	<b>Rate of urbanisation</b>		60,9%
	Poland	121,0		Poland	59,7%
<b>GDP per capita</b>	thous. PLN	51 984	<b>GDP</b>	million PLN	59 564
	avg for Poland = 100%	74,9%		% of Poland	2,27%

### Labor market

End of November 2022

Unemployment persons - thous.	30,8
Employed persons - thous.	397,0
Activ persons - thous.	427,8
Unemployment rate	7,2%
	Poland 5,1%

### Labor market

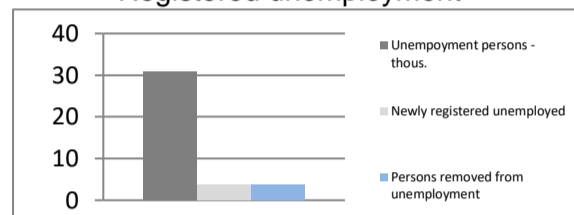


### Labor market

In November 2022

Unemployed per 1 job advertisement	33,0
Newly registered unemployed	3,8
Persons removed from unemployment	3,6

### Registered unemployment

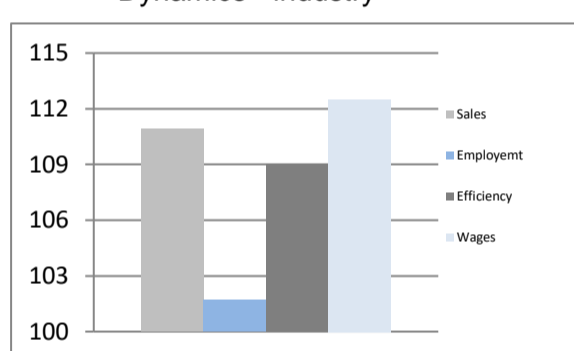


### Industry - enterprise sector

I - XI 2022

Total sales	million PLN	46 299
Sales per employed	thous. PLN	785
Employment	in thous.	59
Wages	PLN	5 787
Sales	I - XI 2021 = 100	110,9
Employment	I - XI 2021 = 100	101,7
Efficiency	I - XI 2021 = 100	109,0
Wages	I - XI 2021 = 100	112,5

### Dynamics - industry

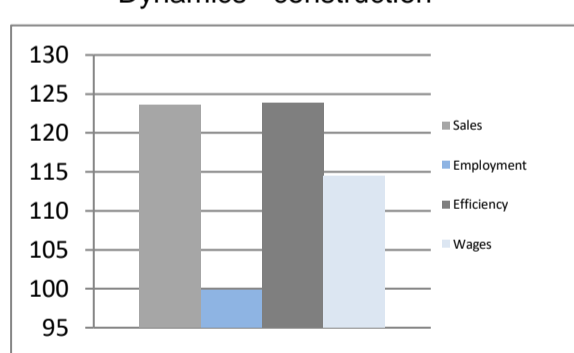


### Construction - enterprise sector

I - XI 2022

Total sales	million PLN	8 964
Sales per employed	thous. PLN	690
Employment	in thous.	13
Wages	PLN	6 946
Sales	I - XI 2021 = 100	123,6
Employment	I - XI 2021 = 100	99,8
Efficiency	I - XI 2021 = 100	123,8
Wages	I - XI 2021 = 100	114,5

### Dynamics - construction

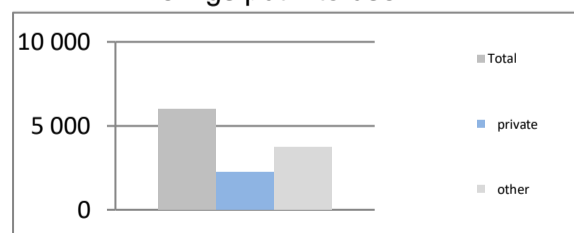


### Dwellings put into use

I - XI 2022

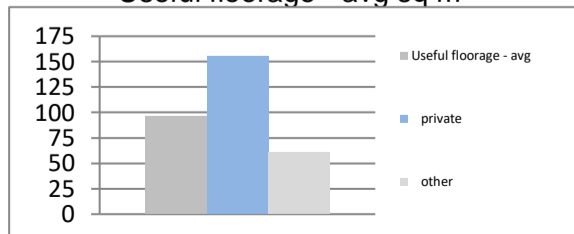
Total	pcs	5 983
private	pcs	2 257
other	pcs	3 726
Dynamics	I - XI 2021 = 100	88,5

### Dwellings put into use



Useful floor area	thous. sq m	576
private	thous. sq m	350
other	thous. sq m	226
Dynamics	I - XI 2021 = 100	93,3

### Useful floorage - avg sq m



Useful floorage - avg	sq m	96
private	sq m	155
other	sq m	61

## POMORSKIE

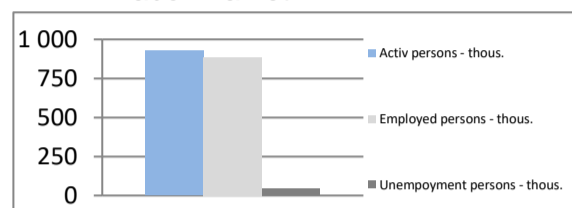
<b>Area</b>	sq km	18 310	<b>Popul.</b>	thous.	2 359
	% of Poland	5,9%		% of Poland	6,2%
<b>Density of population</b>	people per sq km	128,8	<b>Rate of urbanisation</b>		62,7%
	Poland	121,0		Poland	59,7%
<b>GDP per capita</b>	thous. PLN	65 529	<b>GDP</b>	million PLN	154 551
	avg for Poland = 100%	94,5%		% of Poland	5,89%

### Labor market

End of November 2022

Unemployment persons - thous.	41,7
Employed persons - thous.	885,0
Activ persons - thous.	926,7
Unemployment rate	4,5%
	Poland 5,1%

### Labor market

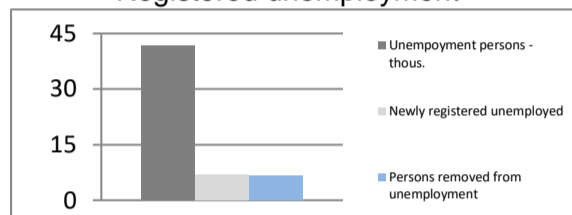


### Labor market

In November 2022

Unemployed per 1 job advertisement	12,0
Newly registered unemployed	6,9
Persons removed from unemployment	6,5

### Registered unemployment

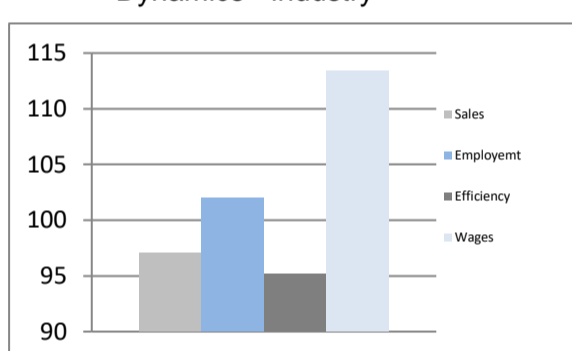


### Industry - enterprise sector

I - XI 2022

Total sales	million PLN	130 212
Sales per employed	thous. PLN	829
Employment	in thous.	157
Wages	PLN	5 787
Sales	I - XI 2021 = 100	97,1
Employment	I - XI 2021 = 100	102,0
Efficiency	I - XI 2021 = 100	95,2
Wages	I - XI 2021 = 100	113,4

### Dynamics - industry

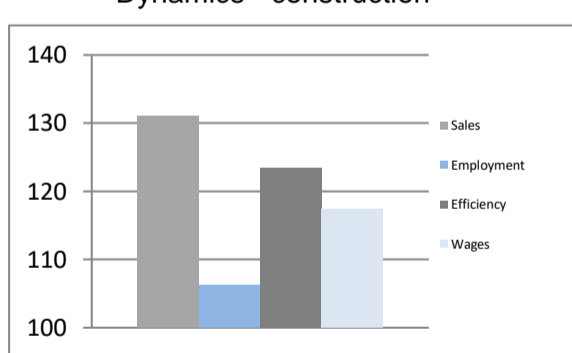


### Construction - enterprise sector

I - XI 2022

Total sales	million PLN	25 230
Sales per employed	thous. PLN	742
Employment	in thous.	34
Wages	PLN	6 527
Sales	I - XI 2021 = 100	131,0
Employment	I - XI 2021 = 100	106,2
Efficiency	I - XI 2021 = 100	123,4
Wages	I - XI 2021 = 100	117,4

### Dynamics - construction

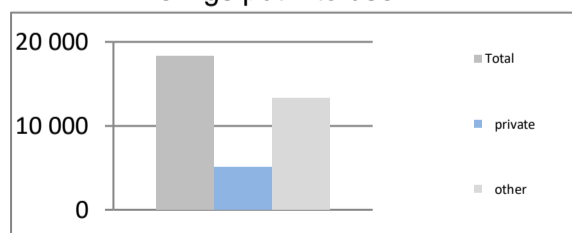


### Dwellings put into use

I - XI 2022

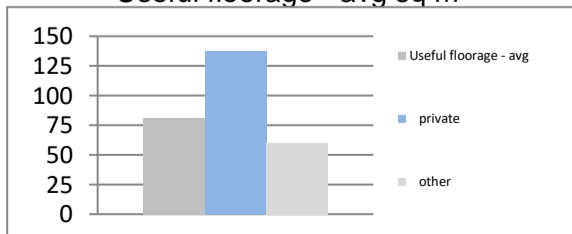
Total	pcs	18 323
private	pcs	4 995
other	pcs	13 328
Dynamics	I - XI 2021 = 100	97,3

### Dwellings put into use



Useful floor area	thous. sq m	1 491
private	thous. sq m	687
other	thous. sq m	804
Dynamics	I - XI 2021 = 100	96,6

### Useful floorage - avg sq m



Useful floorage - avg	sq m	81
private	sq m	138
other	sq m	60

## ŚLĄSKIE

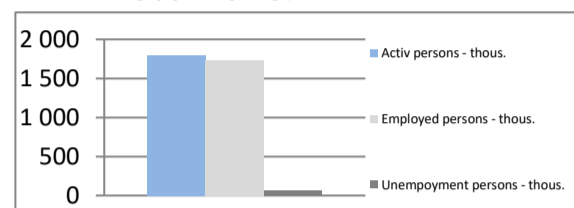
<b>Area</b>	sq km	12 333	<b>Popul.</b>	thous.	4 360
	% of Poland	3,9%		% of Poland	11,5%
<b>Density of population</b>	people per sq km	353,5	<b>Rate of urbanisation</b>		76,0%
	Poland	121,0		Poland	59,7%
<b>GDP per capita</b>	thous. PLN	70 413	<b>GDP</b>	million PLN	307 002
	avg for Poland = 100%	101,5%		% of Poland	11,70%

### Labor market

End of November 2022

Unemployment persons - thous.	64,7
Employed persons - thous.	1 732,5
Activ persons - thous.	1 797,2
Unemployment rate	3,6%
	Poland 5,1%

### Labor market

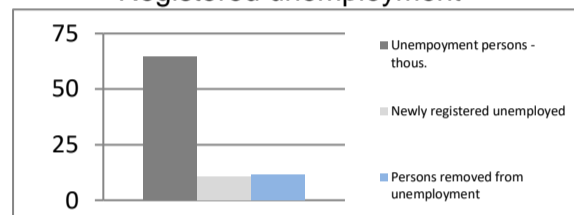


### Labor market

In November 2022

Unemployed per 1 job advertisement	7,0
Newly registered unemployed	10,7
Persons removed from unemployment	11,3

### Registered unemployment

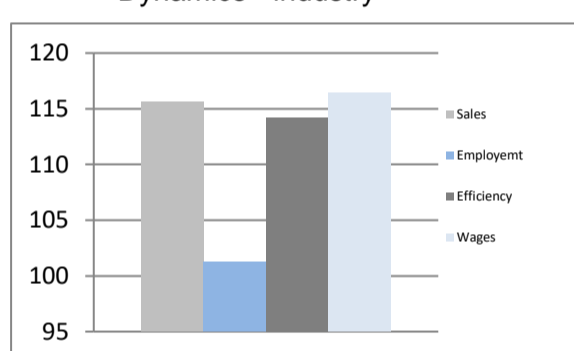


### Industry - enterprise sector

I - XI 2022

Total sales	million PLN	327 743
Sales per employed	thous. PLN	745
Employment	in thous.	440
Wages	PLN	7 189
Sales	I - XI 2021 = 100	115,6
Employment	I - XI 2021 = 100	101,2
Efficiency	I - XI 2021 = 100	114,2
Wages	I - XI 2021 = 100	116,4

### Dynamics - industry

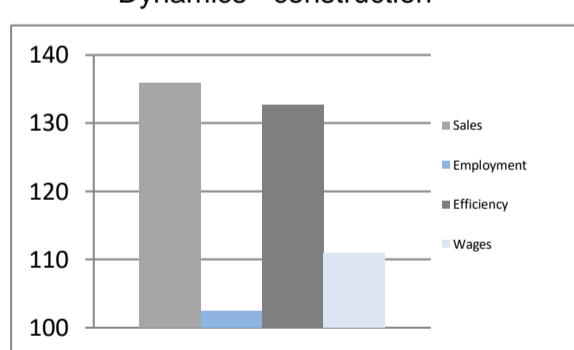


### Construction - enterprise sector

I - XI 2022

Total sales	million PLN	37 490
Sales per employed	thous. PLN	707
Employment	in thous.	53
Wages	PLN	6 174
Sales	I - XI 2021 = 100	135,8
Employment	I - XI 2021 = 100	102,4
Efficiency	I - XI 2021 = 100	132,6
Wages	I - XI 2021 = 100	111,0

### Dynamics - construction

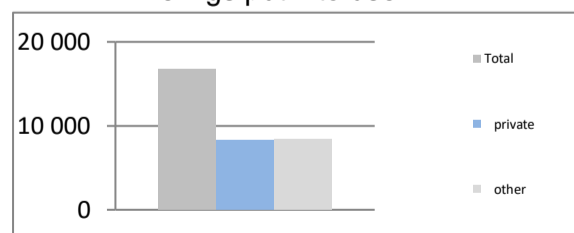


### Dwellings put into use

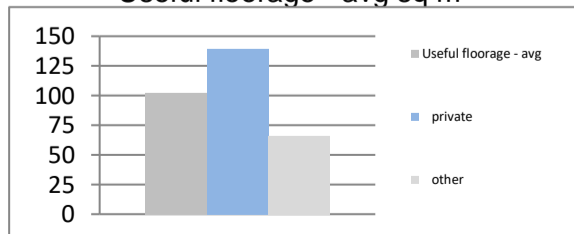
I - XI 2022

Total	pcs	16 754
private	pcs	8 302
other	pcs	8 452
Dynamics	I - XI 2021 = 100	109,6
Useful floor area	thous. sq m	1 715
private	thous. sq m	1 156
other	thous. sq m	559
Dynamics	I - XI 2021 = 100	104,2
Useful floorage - avg	sq m	102
private	sq m	139
other	sq m	66

### Dwellings put into use



### Useful floorage - avg sq m



## ŚWIĘTOKRZYSKIE

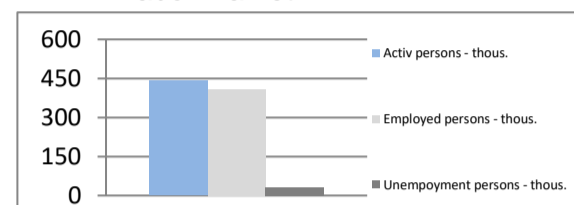
<b>Area</b>	sq km	11 711	<b>Popul.</b>	thous.	1 182
	% of Poland	3,7%		% of Poland	3,1%
<b>Density of population</b>	people per sq km	101,0	<b>Rate of urbanisation</b>		44,9%
	Poland	121,0		Poland	59,7%
<b>GDP per capita</b>	thous. PLN	51 715	<b>GDP</b>	million PLN	61 138
	avg for Poland = 100%	74,6%		% of Poland	2,33%

### Labor market

End of November 2022

Unemployment persons - thous.	33,1
Employed persons - thous.	408,2
Activ persons - thous.	441,3
Unemployment rate	7,5%
Poland	5,1%

### Labor market

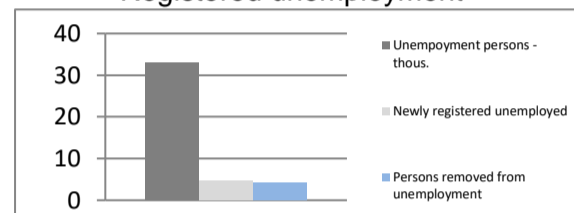


### Labor market

In November 2022

Unemployed per 1 job advertisement	16,0
Newly registered unemployed	4,6
Persons removed from unemployment	4,2

### Registered unemployment

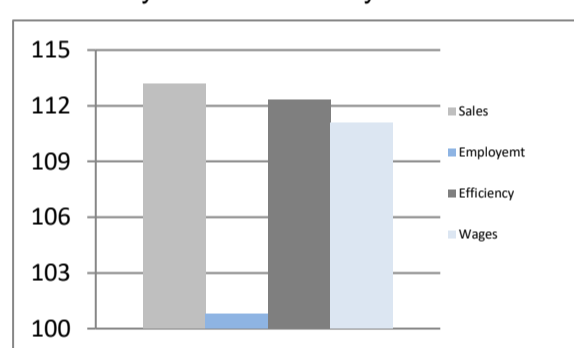


### Industry - enterprise sector

I - XI 2022

Total sales	million PLN	43 350
Sales per employed	thous. PLN	628
Employment	in thous.	69
Wages	PLN	5 773
Sales	I - XI 2021 = 100	113,2
Employment	I - XI 2021 = 100	100,8
Efficiency	I - XI 2021 = 100	112,3
Wages	I - XI 2021 = 100	111,1

### Dynamics - industry

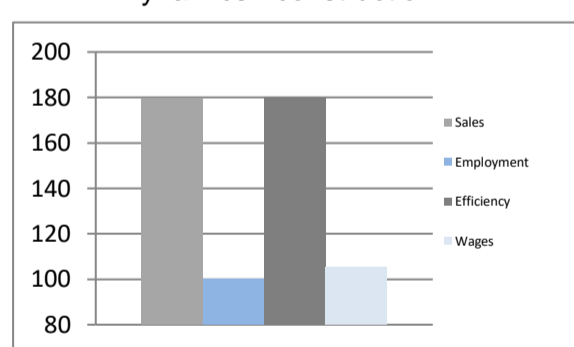


### Construction - enterprise sector

I - XI 2022

Total sales	million PLN	6 828
Sales per employed	thous. PLN	683
Employment	in thous.	10
Wages	PLN	4 894
Sales	I - XI 2021 = 100	179,4
Employment	I - XI 2021 = 100	99,9
Efficiency	I - XI 2021 = 100	179,6
Wages	I - XI 2021 = 100	105,2

### Dynamics - construction

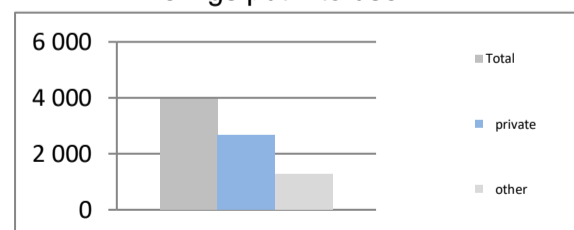


### Dwellings put into use

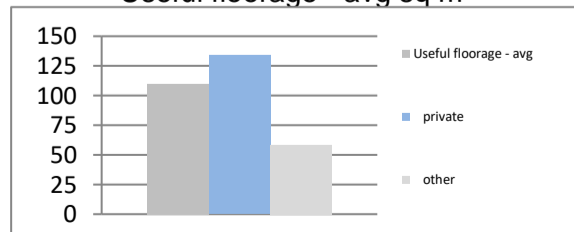
I - XI 2022

Total	pcs	3 942
private	pcs	2 680
other	pcs	1 262
Dynamics	I - XI 2021 = 100	96,3
Useful floor area	thous. sq m	433
private	thous. sq m	359
other	thous. sq m	74
Dynamics	I - XI 2021 = 100	97,6
Useful floorage - avg	sq m	110
private	sq m	134
other	sq m	59

### Dwellings put into use



### Useful floorage - avg sq m



## WARMIŃSKO-MAZURSKIE

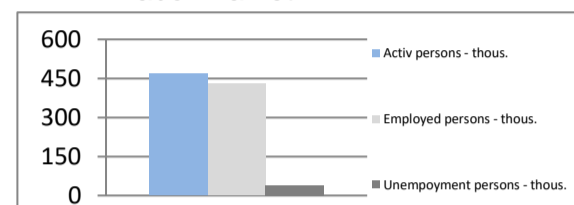
<b>Area</b>	sq km	24 173	<b>Popul.</b>	thous.	1 370
	% of Poland	7,7%		% of Poland	3,6%
<b>Density of population</b>	people per sq km	56,7	<b>Rate of urbanisation</b>		59,1%
	Poland	121,0		Poland	59,7%
<b>GDP per capita</b>	thous. PLN	49 418	<b>GDP</b>	million PLN	67 698
	avg for Poland = 100%	71,2%		% of Poland	2,58%

### Labor market

End of November 2022

Unemployment persons - thous.	39,8
Employed persons - thous.	428,4
Activ persons - thous.	468,2
Unemployment rate	8,5%
	Poland 5,1%

### Labor market

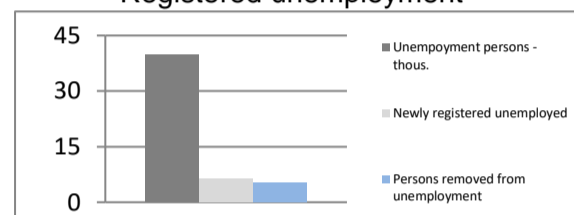


### Labor market

In November 2022

Unemployed per 1 job advertisement	17,0
Newly registered unemployed	6,3
Persons removed from unemployment	5,4

### Registered unemployment

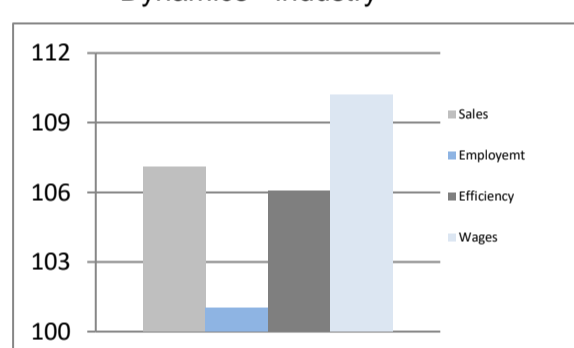


### Industry - enterprise sector

I - XI 2022

Total sales	million PLN	46 734
Sales per employed	thous. PLN	577
Employment	in thous.	81
Wages	PLN	5 459
Sales	I - XI 2021 = 100	107,1
Employment	I - XI 2021 = 100	101,0
Efficiency	I - XI 2021 = 100	106,0
Wages	I - XI 2021 = 100	110,2

### Dynamics - industry

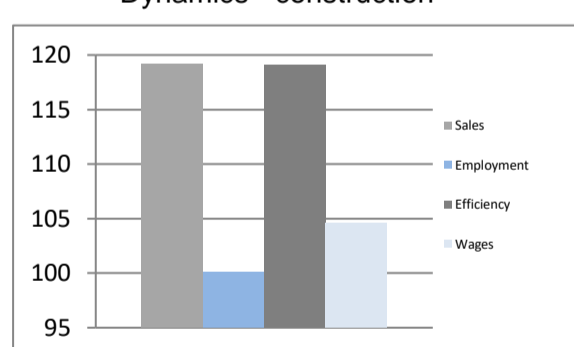


### Construction - enterprise sector

I - XI 2022

Total sales	million PLN	5 201
Sales per employed	thous. PLN	473
Employment	in thous.	11
Wages	PLN	5 271
Sales	I - XI 2021 = 100	119,2
Employment	I - XI 2021 = 100	100,1
Efficiency	I - XI 2021 = 100	119,1
Wages	I - XI 2021 = 100	104,6

### Dynamics - construction

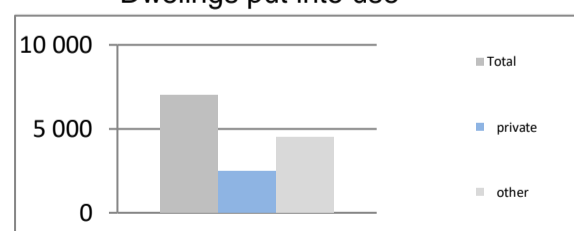


### Dwellings put into use

I - XI 2022

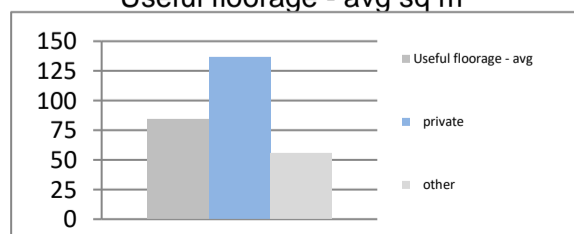
Total	pcs	6 993
private	pcs	2 476
other	pcs	4 517
Dynamics	I - XI 2021 = 100	132,5

### Dwellings put into use



Useful floor area	thous. sq m	589
private	thous. sq m	338
other	thous. sq m	251
Dynamics	I - XI 2021 = 100	122,3

### Useful floorage - avg sq m



Useful floorage - avg	sq m	84
private	sq m	137
other	sq m	56

## WIELKOPOLSKIE

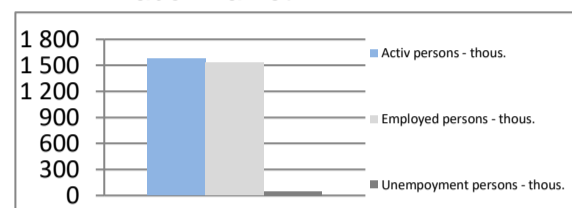
<b>Area</b>	sq km	29 827	<b>Popul.</b>	thous.	3 496
	% of Poland	9,5%		% of Poland	9,2%
<b>Density of population</b>	people per sq km	117,2	<b>Rate of urbanisation</b>		53,5%
	Poland	121,0		Poland	59,7%
<b>GDP per capita</b>	thous. PLN	74 449	<b>GDP</b>	million PLN	260 296
	avg for Poland = 100%	107,3%		% of Poland	9,92%

### Labor market

End of November 2022

Unemployment persons - thous.	45,6
Employed persons - thous.	1 526,8
Activ persons - thous.	1 572,4
Unemployment rate	2,9%
	Poland 5,1%

### Labor market

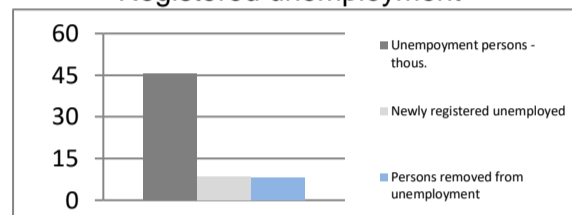


### Labor market

In November 2022

Unemployed per 1 job advertisement	13,0
Newly registered unemployed	8,6
Persons removed from unemployment	8,0

### Registered unemployment

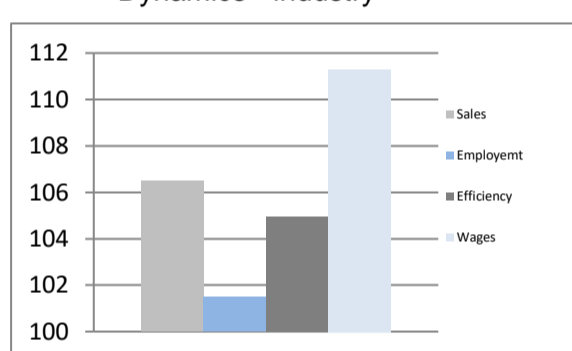


### Industry - enterprise sector

I - XI 2022

Total sales	million PLN	241 100
Sales per employed	thous. PLN	691
Employment	in thous.	349
Wages	PLN	6 136
Sales	I - XI 2021 = 100	106,5
Employment	I - XI 2021 = 100	101,5
Efficiency	I - XI 2021 = 100	104,9
Wages	I - XI 2021 = 100	111,3

### Dynamics - industry

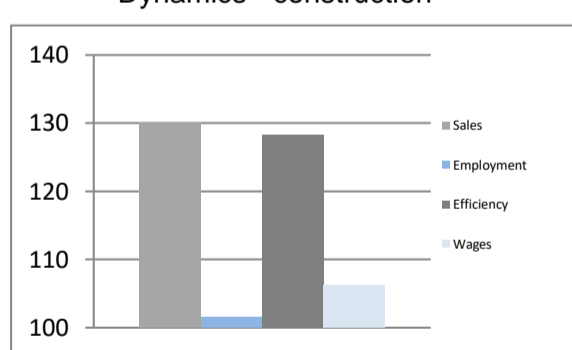


### Construction - enterprise sector

I - XI 2022

Total sales	million PLN	40 255
Sales per employed	thous. PLN	982
Employment	in thous.	41
Wages	PLN	6 023
Sales	I - XI 2021 = 100	130,1
Employment	I - XI 2021 = 100	101,5
Efficiency	I - XI 2021 = 100	128,2
Wages	I - XI 2021 = 100	106,2

### Dynamics - construction

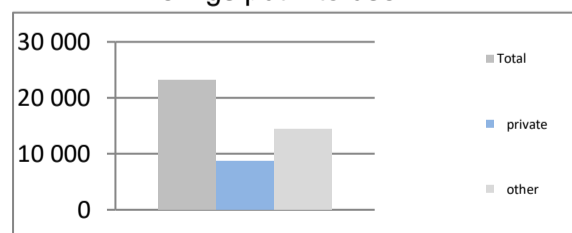


### Dwellings put into use

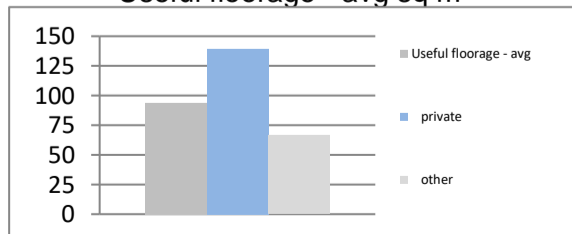
I - XI 2022

Total	pcs	23 136
private	pcs	8 689
other	pcs	14 447
Dynamics	I - XI 2021 = 100	93,2
Useful floor area	thous. sq m	2 172
private	thous. sq m	1 212
other	thous. sq m	960
Dynamics	I - XI 2021 = 100	96,9
Useful floorage - avg	sq m	94
private	sq m	139
other	sq m	66

### Dwellings put into use



### Useful floorage - avg sq m



## ZACHODNIOPOMORSKIE

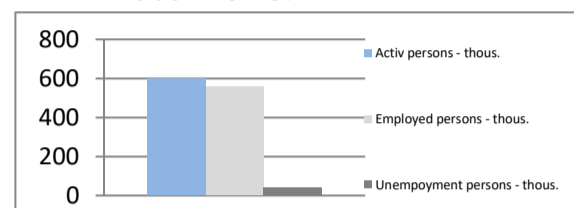
<b>Area</b>	sq km	22 892	<b>Popul.</b>	thous.	1 645
	% of Poland	7,3%		% of Poland	4,3%
<b>Density of population</b>	people per sq km	71,9	<b>Rate of urbanisation</b>		68,2%
	Poland	121,0		Poland	59,7%
<b>GDP per capita</b>	thous. PLN	58 537	<b>GDP</b>	million PLN	96 299
	avg for Poland = 100%	84,4%		% of Poland	3,67%

### Labor market

End of November 2022

Unemployment persons - thous.	39,4
Employed persons - thous.	557,6
Activ persons - thous.	597,0
Unemployment rate	6,6%
	Poland 5,1%

### Labor market

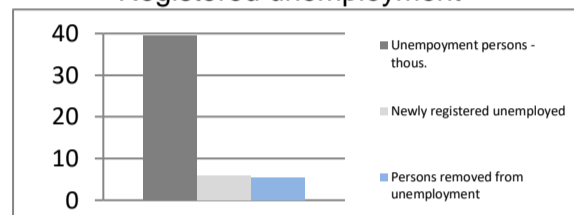


### Labor market

In November 2022

Unemployed per 1 job advertisement	11,0
Newly registered unemployed	6,0
Persons removed from unemployment	5,4

### Registered unemployment

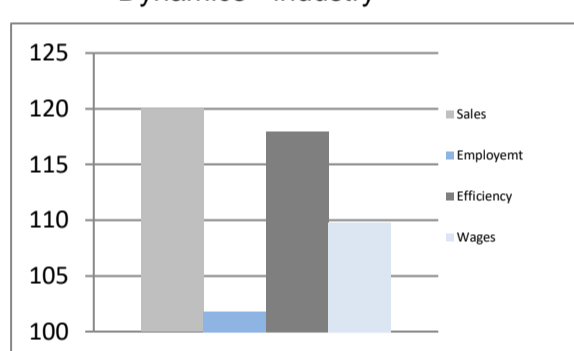


### Industry - enterprise sector

I - XI 2022

Total sales	million PLN	65 179
Sales per employed	thous. PLN	693
Employment	in thous.	94
Wages	PLN	6 092
Sales	I - XI 2021 = 100	120,0
Employment	I - XI 2021 = 100	101,8
Efficiency	I - XI 2021 = 100	117,9
Wages	I - XI 2021 = 100	109,8

### Dynamics - industry

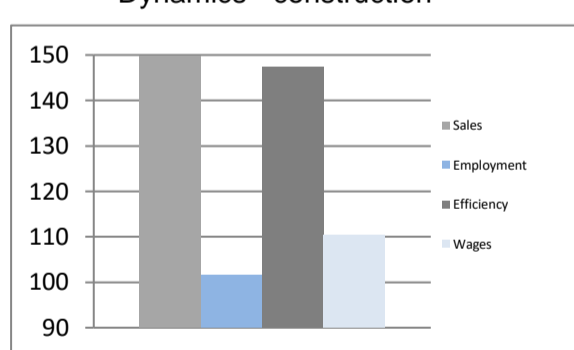


### Construction - enterprise sector

I - XI 2022

Total sales	million PLN	10 802
Sales per employed	thous. PLN	900
Employment	in thous.	12
Wages	PLN	5 517
Sales	I - XI 2021 = 100	149,8
Employment	I - XI 2021 = 100	101,6
Efficiency	I - XI 2021 = 100	147,4
Wages	I - XI 2021 = 100	110,4

### Dynamics - construction

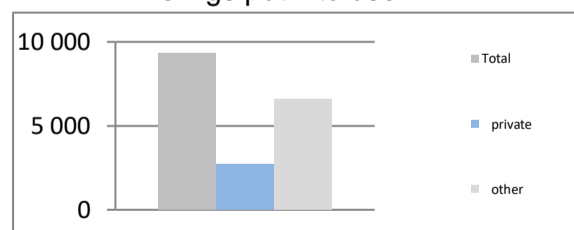


### Dwellings put into use

I - XI 2022

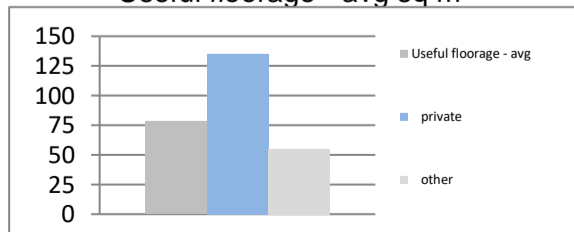
Total	pcs	9 289
private	pcs	2 688
other	pcs	6 601
Dynamics	I - XI 2021 = 100	99,8

### Dwellings put into use



Useful floor area	thous. sq m	727
private	thous. sq m	364
other	thous. sq m	364
Dynamics	I - XI 2021 = 100	99,1

### Useful floorage - avg sq m



Useful floorage - avg	sq m	78
private	sq m	135
other	sq m	55